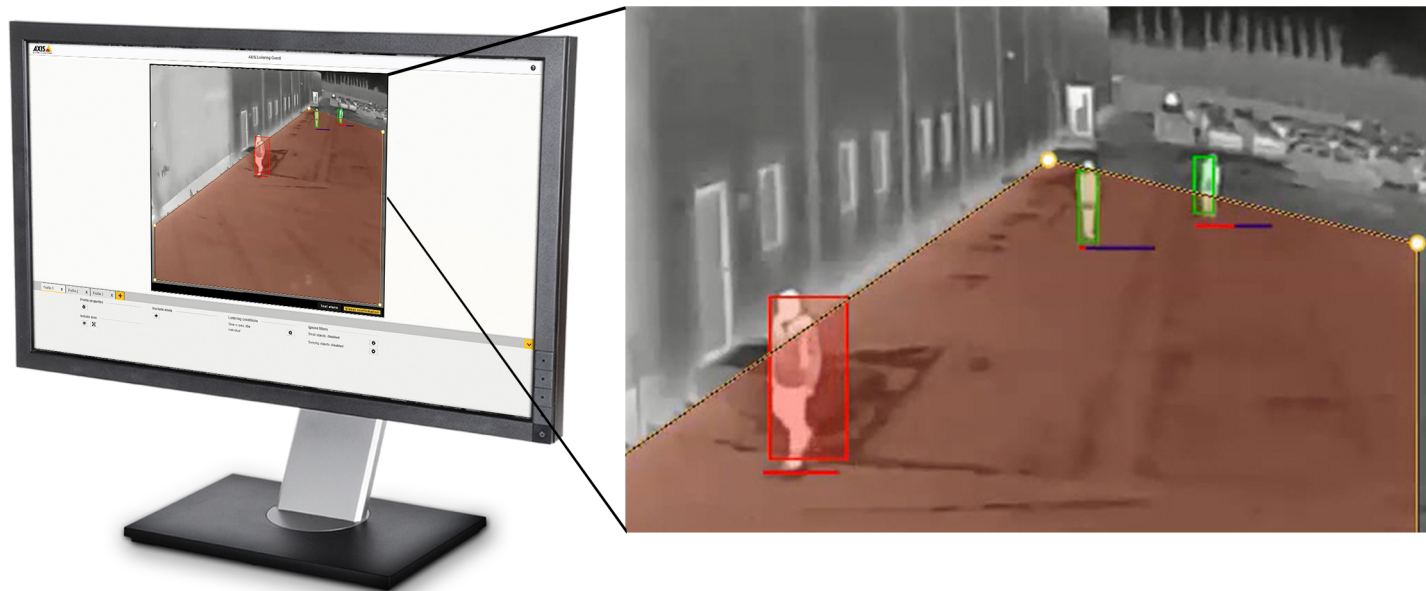


# AXIS Loitering Guard

## For detecting loiterers

AXIS Loitering Guard tracks moving objects such as people and vehicles, and triggers an alarm if they have been in a predefined area for too long. The application is ideal for detecting loiterers, particularly during after business hours, on semi-public properties such as office parking lots, school yards, and areas near fences. It can help prevent crime such as vandalism and break-ins. The video-based application, which runs on a camera, is easy to configure and supports multiple profiles for different loitering conditions. Exclude areas, filters, and perspective configuration help reduce false alarms.

- > **Intelligent tracking algorithm for loitering detection**
- > **Multiple loitering conditions and profiles for extra flexibility**
- > **Perspective configuration for fewer false alarms**
- > **Quick and easy configuration**



## AXIS Loitering Guard

| Application                 |                                                                                                                                                                                                                                                                                                                                                                                                                                                                                                                                                                             | System integration                                                                                                                               |                                                                                                                                                                                                                                                  |
|-----------------------------|-----------------------------------------------------------------------------------------------------------------------------------------------------------------------------------------------------------------------------------------------------------------------------------------------------------------------------------------------------------------------------------------------------------------------------------------------------------------------------------------------------------------------------------------------------------------------------|--------------------------------------------------------------------------------------------------------------------------------------------------|--------------------------------------------------------------------------------------------------------------------------------------------------------------------------------------------------------------------------------------------------|
| <b>Supported products</b>   | Axis network video products with support for AXIS Camera Application Platform and with firmware 7.x or higher.                                                                                                                                                                                                                                                                                                                                                                                                                                                              | <b>Application Programming Interface</b>                                                                                                         | Open API for software integration, including VAPIX® and AXIS Camera Application Platform; specifications at <a href="http://www.axis.com">www.axis.com</a>                                                                                       |
| <b>Licenses</b>             | Single or 10-pack license codes can be purchased from an Axis distributor. One license is required per camera. The license can be activated from the camera or online. A 60-day trial version is available online.<br>Note that this application is available at no additional cost for Axis Q-line products.                                                                                                                                                                                                                                                               | <b>Event streaming</b>                                                                                                                           | Supports event streaming to video management software (VMS) Integrates with camera event management system to enable event streaming to VMS and camera actions such as I/O control, notification, and edge storage.<br>ONVIF® Motion Alarm event |
| <b>Settings</b>             | Two loitering conditions:<br><b>Individual:</b> tracks the time of each moving object detected in a predefined area<br><b>Group:</b> tracks the time when there is any moving objects in a predefined area<br>One loitering condition per profile<br>One include area and 3 exclude areas per profile (10 point polygons)<br>Up to 10 profiles for all cameras except multichannel products which have up to 3 concurrent profiles.<br>Visual confirmation to verify setup<br>Axis False Alarm Filtering for swaying objects and small objects<br>Perspective configuration | <b>General</b>                                                                                                                                   |                                                                                                                                                                                                                                                  |
| <b>Configuration</b>        | Web configuration included                                                                                                                                                                                                                                                                                                                                                                                                                                                                                                                                                  | <b>Languages</b>                                                                                                                                 | English, German, French, Polish, Spanish, Italian, Russian, Simplified Chinese, Traditional Chinese, Japanese, Korean, Portuguese                                                                                                                |
| <b>Scenarios</b>            |                                                                                                                                                                                                                                                                                                                                                                                                                                                                                                                                                                             | <b>Environmental responsibility:</b><br><a href="http://www.axis.com/environmental-responsibility">www.axis.com/environmental-responsibility</a> |                                                                                                                                                                                                                                                  |
| <b>Typical applications</b> | General low-traffic areas where loitering might pose a security issue, such as parking lots, school yards, and fenced-off areas                                                                                                                                                                                                                                                                                                                                                                                                                                             |                                                                                                                                                  |                                                                                                                                                                                                                                                  |
| <b>Limitations</b>          | Weather conditions such as heavy rain or snow may affect detection accuracy.                                                                                                                                                                                                                                                                                                                                                                                                                                                                                                |                                                                                                                                                  |                                                                                                                                                                                                                                                  |